

CERTIFICATE OF LOCATION OF GOVERNMENT CORNER

NORTHEAST Corner of Section 3, Township 106, Range 39, 5TH P.M.

STATE OF MINNESOTA, County of MURRAY

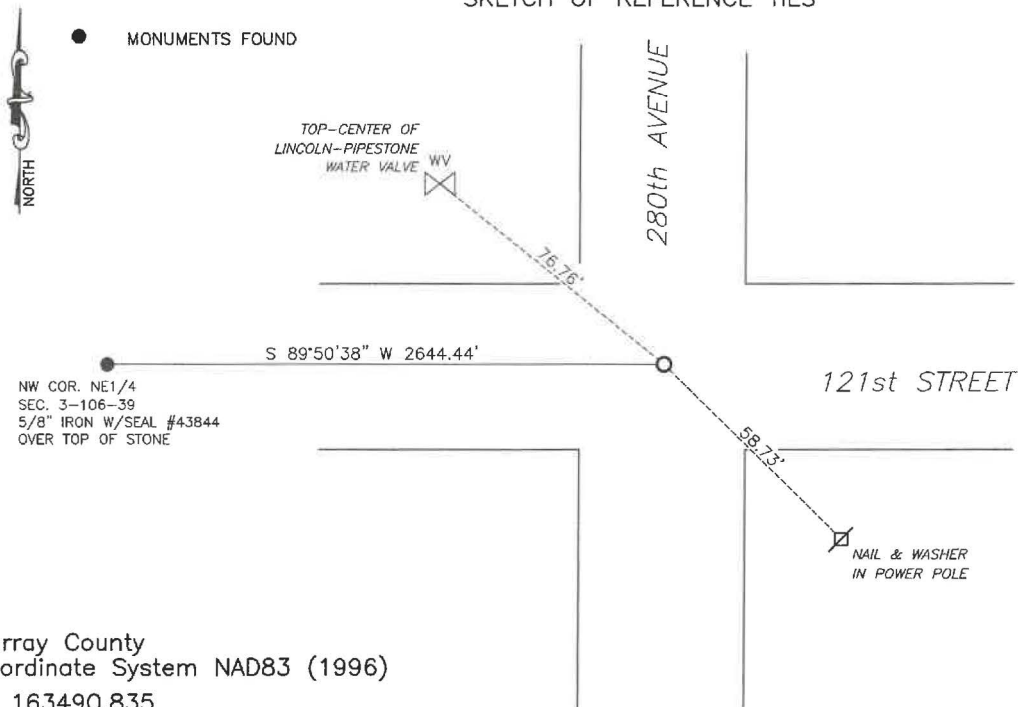
At the corner location shown on the sketch:

☒ On 7/22/2024 found a Concrete monument with "X" on top
DATE

☒ left monument as found, ☐ lowered monument, ☐ removed monument (explain)

☒ On 1/16/2025 placed a 5/8" iron with seal #43844 over top of the concrete monument
DATE

SKETCH OF REFERENCE TIES



Murray County
Coordinate System NAD83 (1996)

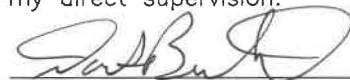
N: 163490.835
E: 569510.021

WGS84

LAT: 44°01'18.8597"
LON: -95°30'08.7673"

Statement of evidence relative to this corner location is on back of page.

I hereby certify that this document and the data contained herein was prepared by me or under my direct supervision.



Daniel L. Bueltel
License No. 43844

3/12/2025
DATE

MAR 13 2025



MURRAY COUNTY RECORDER

Statement of Evidence

NORTHEAST CORNER SECTION 3, T106N, R39W of the 5th P.M.

In September 1858, W.J. Neely surveyed the east township line.

In July of 1861, J.W. Myers surveyed the north, south, and west township lines.

In August of 1861, Wellman & Smoot subdivided the township.

A survey in September of 1892 shows a concrete monument with an "X".

A survey from February 5, 1934 shows a found concrete monument with and "X".

County records from 1967 and 2012 both show a $\frac{3}{4}$ " iron pin at the corner.

On July 22, 2024 Bueltel-Moseng Land Surveying found a $\frac{3}{4}$ " square iron pin, removed a dug with backhoe. Found a concrete monument with an "X" chiseled on top. Accepted the monument as the corner. Set the $\frac{3}{4}$ " square iron on north side of monument.

Returned on January 16, 2025 and placed a $\frac{5}{8}$ " iron with seal #43844 over top of the concrete monument.